

# HEALTH & SAFETY PROTOCOLS

**Objective:** Establish and implement enhanced healthy and safety protocols for a responsible and safe environment at Innovation Works.

\*Health & Safety Protocols are subject to change according to Public Health guidelines.\*



## Personal Protective Equipment

All staff, co-tenants, and visitors are **required** to wear a face mask when moving about the space. Masks are not required when working alone and distanced from others or when eating or drinking.



## Sanitization Protocols

We have increased the number of sanitization stations and will provide anti-viral cleaner for use. Staff will observe and monitor the proper sanitization protocols.



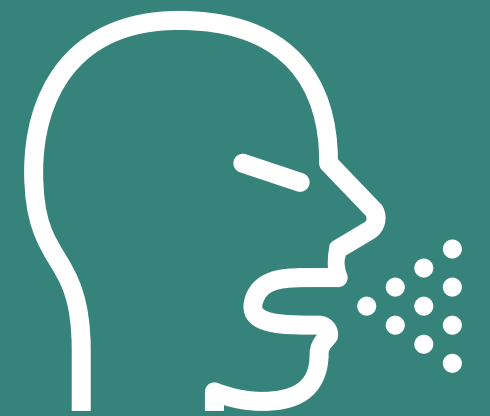
## Proof of Double Vaccination

You must be fully vaccinated to enter Innovation Works. This includes all staff, co-tenant members, their guests and clients.



## Enhanced Cleaning

With the help of a Day Porter to clean high touch surfaces during the day, we will also have volunteers cleaning during their morning/afternoon shifts and provide spray bottles of virus killing cleaning solution for co-tenants to wipe down surfaces after use.



## COVID Screening

Everyone entering Innovation Works will be asked to self monitor for COVID-19 symptoms. If you have symptoms or have been in contact with any symptomatic person, we ask that you stay home and isolate for 14 days.



## Contact Tracing

Individuals entering Innovation Works, are required to sign in and out of the space with their name, company, date, and time.